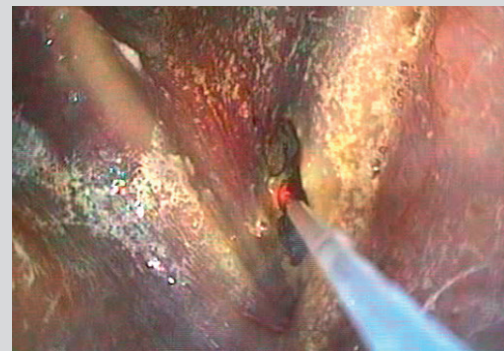
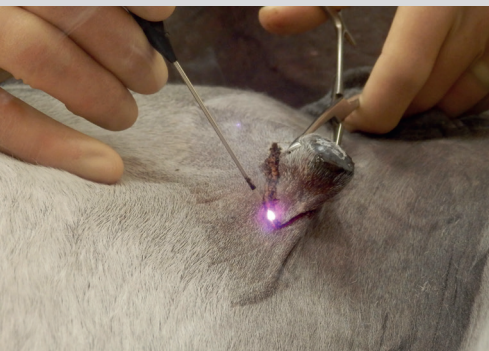


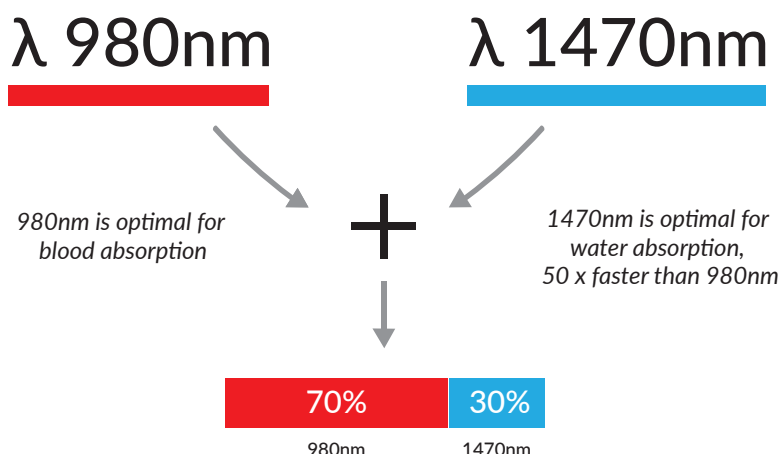
45W DUAL WAVELENGTH SURGICAL LASER

Enhanced vaporisation, coagulation and cutting

PRECISION GERMAN ENGINEERING



WHY DUAL WAVELENGTH?



- A combination wavelength has been proven to **improve efficiency when cutting** by **optimising water and blood absorption** across the 1470nm and 980nm wavelengths respectively
- **Less swelling** is produced, particularly in respiratory surgery, as less joules/energy are used to cut the same amount of tissue and achieve desired result
- The wavelengths can be combined and used simultaneously meaning more **efficient cutting** and **less charring of tissue**
- **Combination wavelength** particularly effective when removing sarcoids, **low re-occurrence rates**.

EQUINE APPLICATIONS

- Epiglottic entrapment
- Axial deviation of aryepiglottic folds
- Laser hobbyday
- Ethmoid haematoma
- Guttural pouch membrane
- Lymphoid polyps
- Cordectomy
- Sarcoid/melanoma removal
- Uterine cysts/adhesions
- Ablation of lesions

SMALL ANIMAL APPLICATIONS

- Bulla osteotomy
- Ear, nose and throat growths
- Rectal polyps
- Soft pallet resection
- Urinary bladder polyps
- Squamous cell carcinoma
- Gingival hyperplasia
- Laryngeal granuloma
- Castration
- Malignant melanomas

Enhanced vaporisation, coagulation and cutting



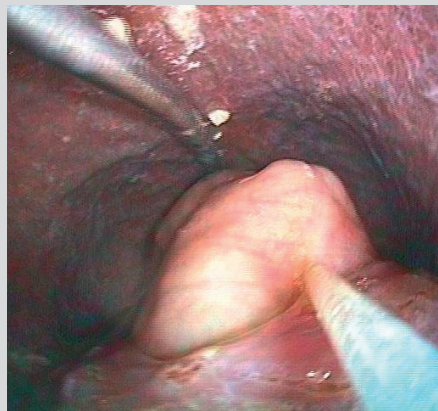
45 WATTS - DUAL WAVELENGTH

PRECISION GERMAN ENGINEERING

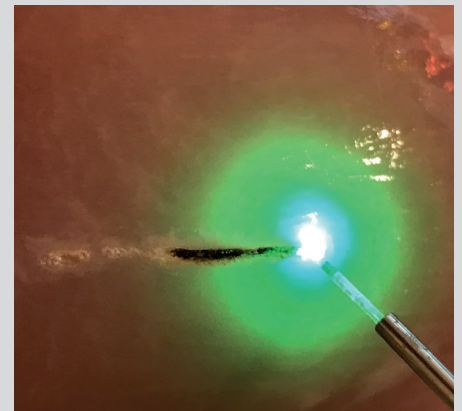
- 980nm and 1470nm wavelength combined for optimum tissue interaction
- Increased power output to 45W
- Intuitive, touch screen operation
- Transparent safety goggles
- Green aiming beam instead of red for ease of use.



Sarcoid removal



Airway surgery



NEW green laser beam



Reference List

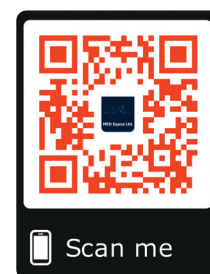
- Agnes Banks Equine (Australia)
- B and W equine Group
- Bearl Equine Clinic
- Bristol University Veterinary School
- Buckingham Equine Vets Ltd.
- Devon Equine Vets
- Dubai Equine Hospital
- Endell Veterinary Group Ltd.
- Fellowes Farm Equine Clinic Ltd.
- Fethard Equine Hospital
- Green Veterinary Practice
- Liphook Equine Hospital
- Minster Veterinary Practice
- North West Equine Vets Ltd.
- Oakham Veterinary Hospital
- Rainbow Equine Hospital
- Ridings Equine Vets
- Strömsholm Equine Hospital
- Singapore Turf Club
- Torch Equine Vets
- Troytown Equine Hospital
- University of Cambridge
- University of Liverpool



SUPPORT

- Training, service and support as standard
- Loan equipment supplied during service/repair
- UK engineers

Why not trade in your old laser?



SPECIFICATION

Model	Leonardo Dual 45
Ref	SL980+1470nm45W
Wavelength	980nm and 1470nm
Power	max. 45W (1470nm/15Watt + 980nm/30 Watt). Separately adjustable
Fibre diameter	≥ 360 µm
Aiming beam	532nm and 635nm, green 1mW, red 4mW, user controlled intensity
Treatment mode	CW, Pulse Mode, ELVeS Signal, ELVeS Segment, Derma Mode
Pulse duration/-break	0.01 - 60sec / 0.01 -60 sec
Power supply	110 - 24-VAC, 50/60Hz, 450VA
Dimensions (H x W x D)	approx. 28cm x 37cm x 9cm
Weight:	approx. 8.5kg

